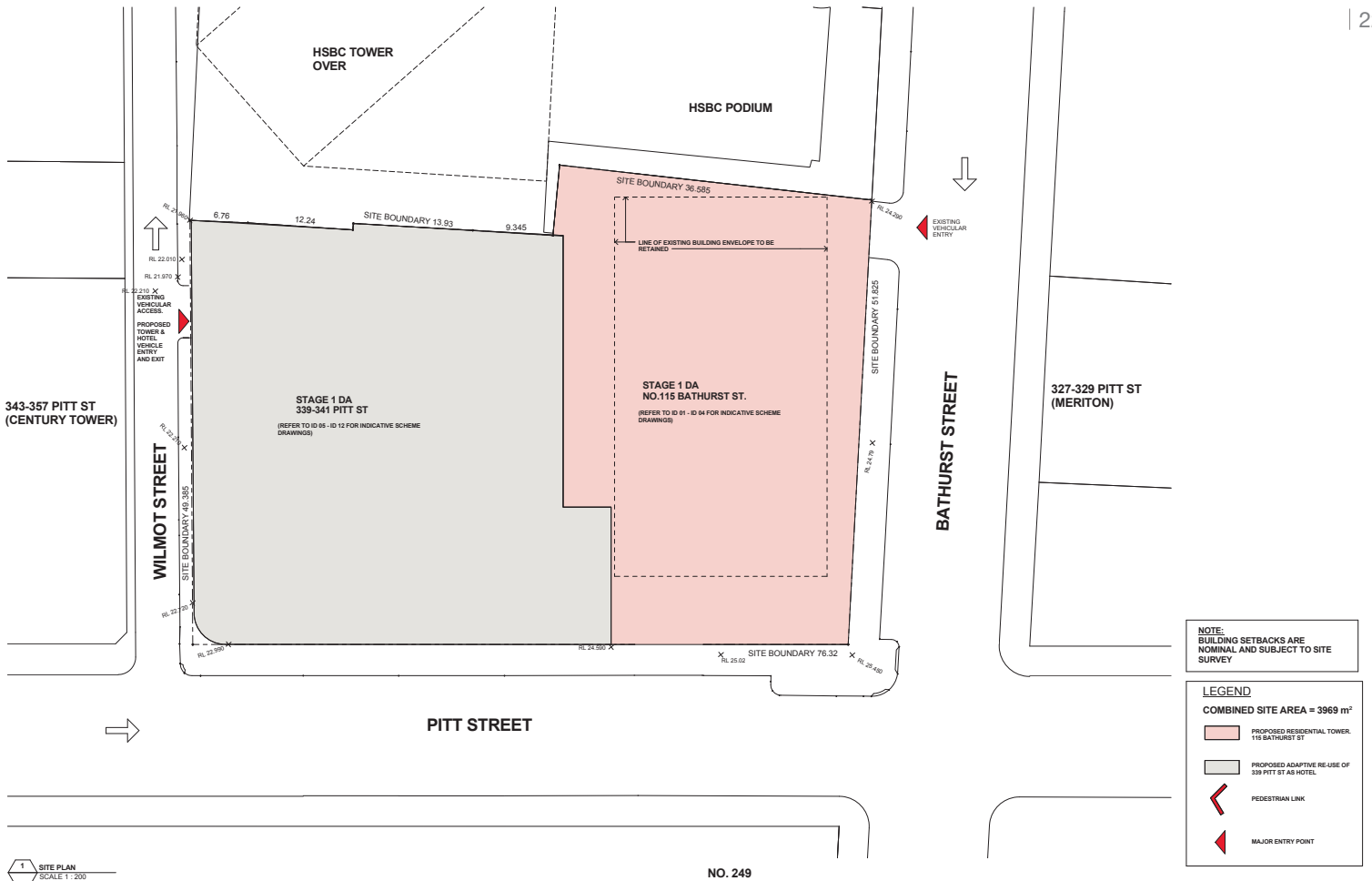


ATTACHMENT A

ATTACHMENT A

SELECTED DRAWINGS

115-119 BATHURST STREET, SYDNEY



1 SITE PLAN
SCALE 1:200

NO. 249

MASSING ENVELOPE

SITE PLAN Rev. F
CA 3051 DA 01

115 Bathurst Street
12/08/13

Architect:
cronepartners
level 2, 364 kent street,
sydney, nsw 2000, australia
ph: +61 2 8295 5300

Client:
GREENLAND HOLDING GROUP
OVERSEAS INVESTMENT COMPANY LIMITED
Greenland
FORTUNE GLOBAL SEC
Greenland
infinite

REV E 15.07.2013 PITT ST CARPARK ENTRY DELETED
CREATIVE HUB WIDTH INCREASED TO MINIMUM 6m
REV F 12.08.2013 CREATIVE HUB RENAMED CREATIVE HUB / ACTIVE USES

scale as indicated @A1

ATTACHMENT A



1 BASEMENT - 03
SCALE 1:200

Architect:
cronepartners
level 2, 364 kent street,
sydney, nsw 2000, australia
ph: +61 2 8295 5300

Client:
GREENLAND HOLDING GROUP
OVERSEAS INVESTMENT COMPANY LIMITED
Greenland FORTUNE GLOBAL SEE
Greenland infinite

REV F 12.08.2013 CREATIVE HUB RENAMED CREATIVE HUB / ACTIVE USES

scale As indicated @A1

MASSING ENVELOPE

BASEMENT 3 | Rev: F | DA 02
CA 3051

115 Bathurst Street
12/08/13

ATTACHMENT A



1 BASEMENT - 02
SCALE 1:200

Architect:
cronepartners
level 2, 364 kent street,
sydney, nsw 2000, australia
ph: +61 2 8295 5300

Client:
GREENLAND HOLDING GROUP
OVERSEAS INVESTMENT COMPANY LIMITED
Greenland
FORTUNE GLOBAL SEE
Greenland
infinite

REV F 12.08.2013 CREATIVE HUB RENAMED CREATIVE HUB / ACTIVE USES

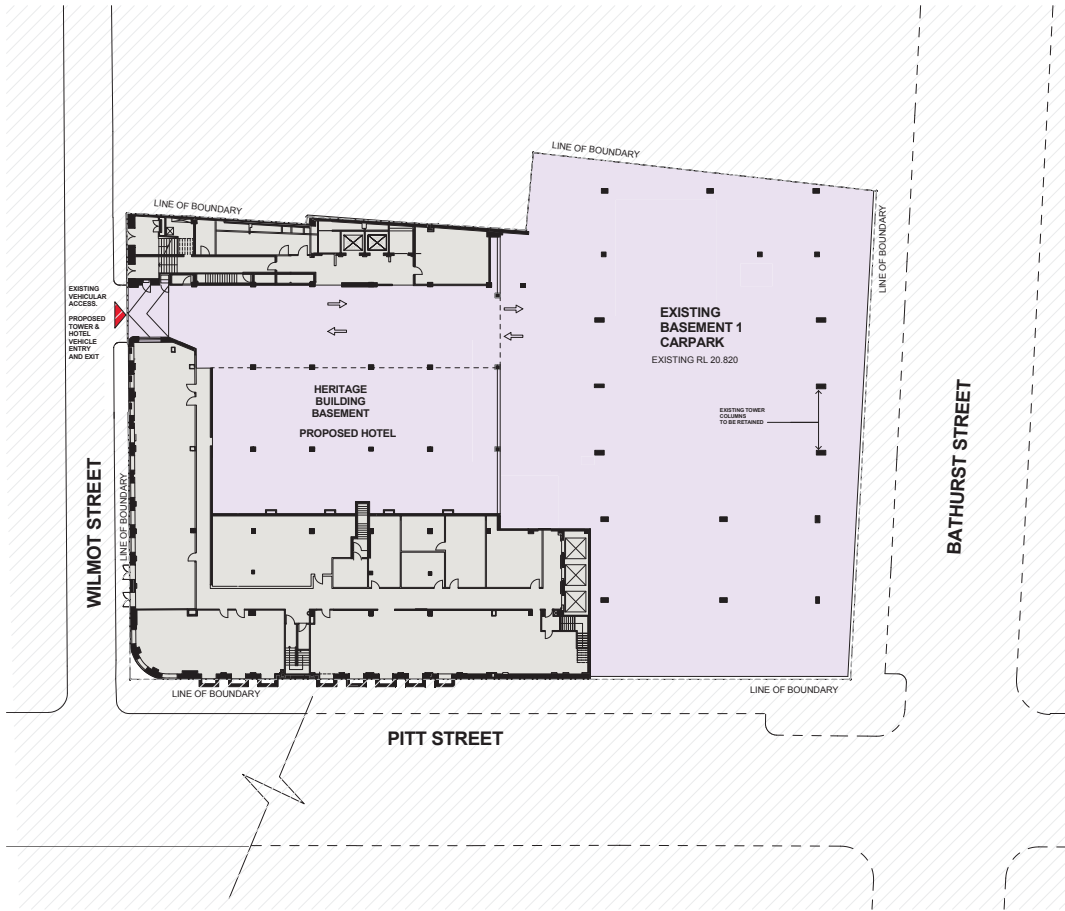
scale As indicated @A1

MASSING ENVELOPE

BASEMENT 2 | Rev: F | CA 3051 | DA 03

115 Bathurst Street
12/08/13

ATTACHMENT A



NOTE:
BUILDING SETBACKS ARE NOMINAL AND SUBJECT TO SITE SURVEY

MASSING ENVELOPE KEY

- RESIDENTIAL
- RETAIL
- CREATIVE HUB / ACTIVE USES
- SERVICES/PLANT
- HOTEL
- CARPARK
- PEDESTRIAN LINK
- MAJOR ENTRY POINT

1 BASEMENT 01
SCALE 1:200

Architect:
cronepartners
level 2, 364 kent street,
sydney, nsw 2000, australia
ph: +61 2 8295 5300

Client:
GREENLAND HOLDING GROUP
OVERSEAS INVESTMENT COMPANY LIMITED
Greenland FORTUNE GLOBAL 500
Greenland infinite

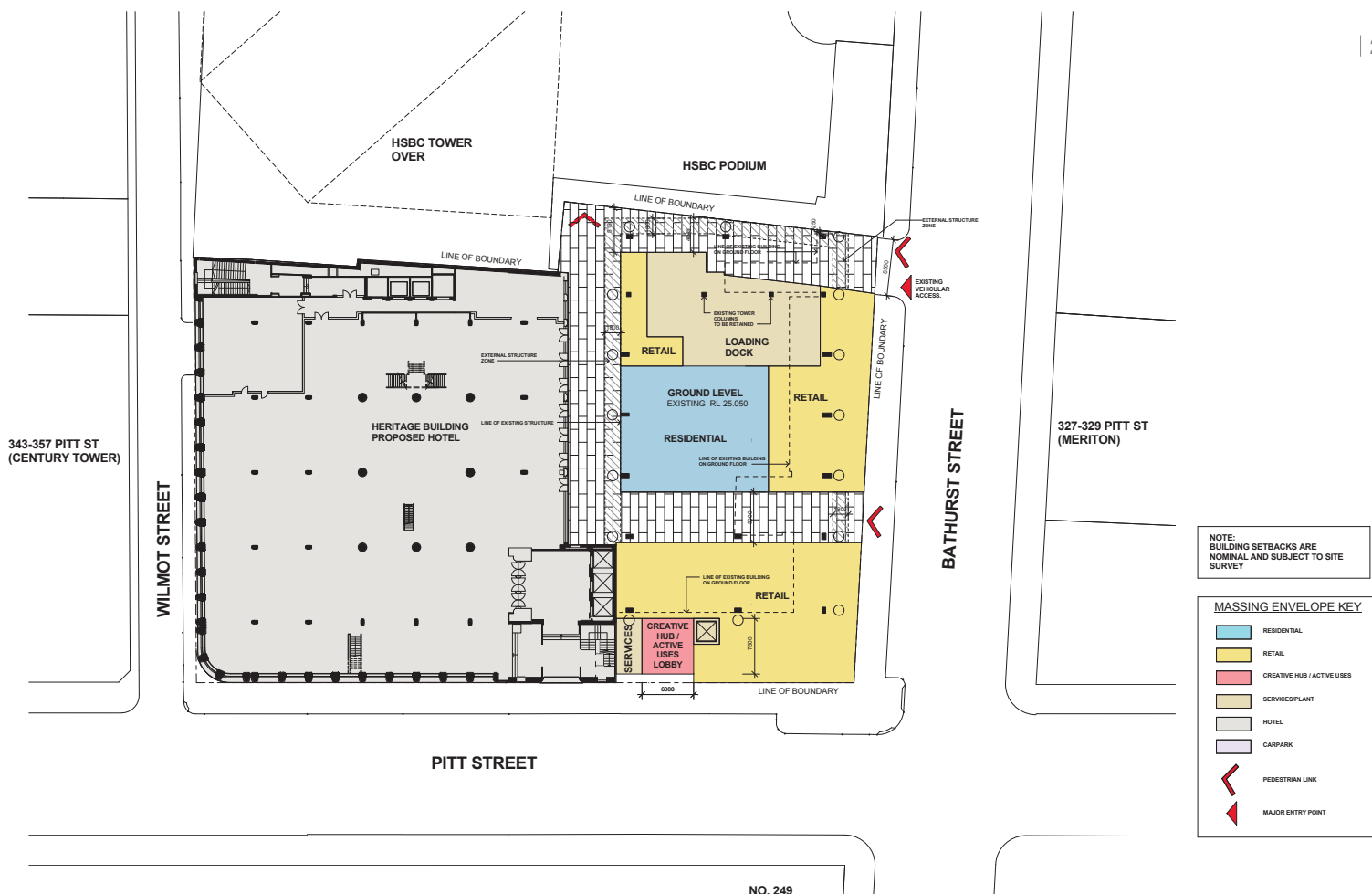
REV E 15.07.2013 PITT ST CARPARK ENTRY DELETED
REV F 12.08.2013 CREATIVE HUB RENAMED CREATIVE HUB / ACTIVE USES



scale As indicated @A1

MASSING ENVELOPE

BASEMENT 1 | Rev: F | DA 04
CA 3051
115 Bathurst Street
12/08/13



1 GROUND FLOOR
SCALE 1:200

NO. 249

MASSING ENVELOPE

GROUND LEVEL | Rev: F | DA 05
CA 3051



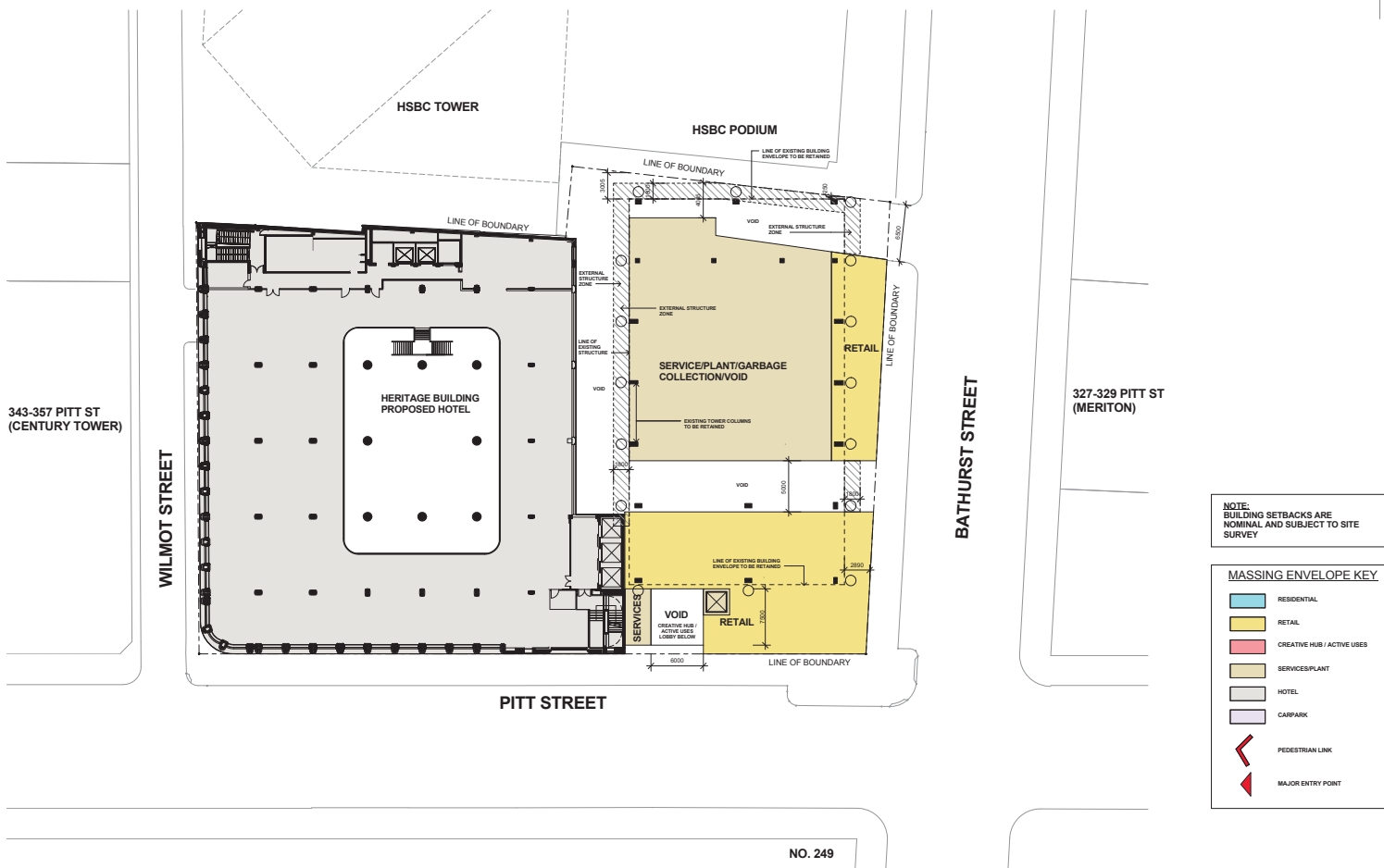
115 Bathurst Street
12/08/13

Architect:
cronepartners
level 2, 364 kent street,
sydney, nsw 2000, australia
ph: +61 2 8295 5300

Client:
GREENLAND HOLDING GROUP
OVERSEAS INVESTMENT COMPANY LIMITED
Greenland | **Greenland**
FORTUNE GLOBAL SEE | infinite

REV E 15.07.2013 PITT ST CARPARK ENTRY DELETED
REV F 12.08.2013 CREATIVE HUB RENAMED 'CREATIVE HUB / ACTIVE USES'

ATTACHMENT A

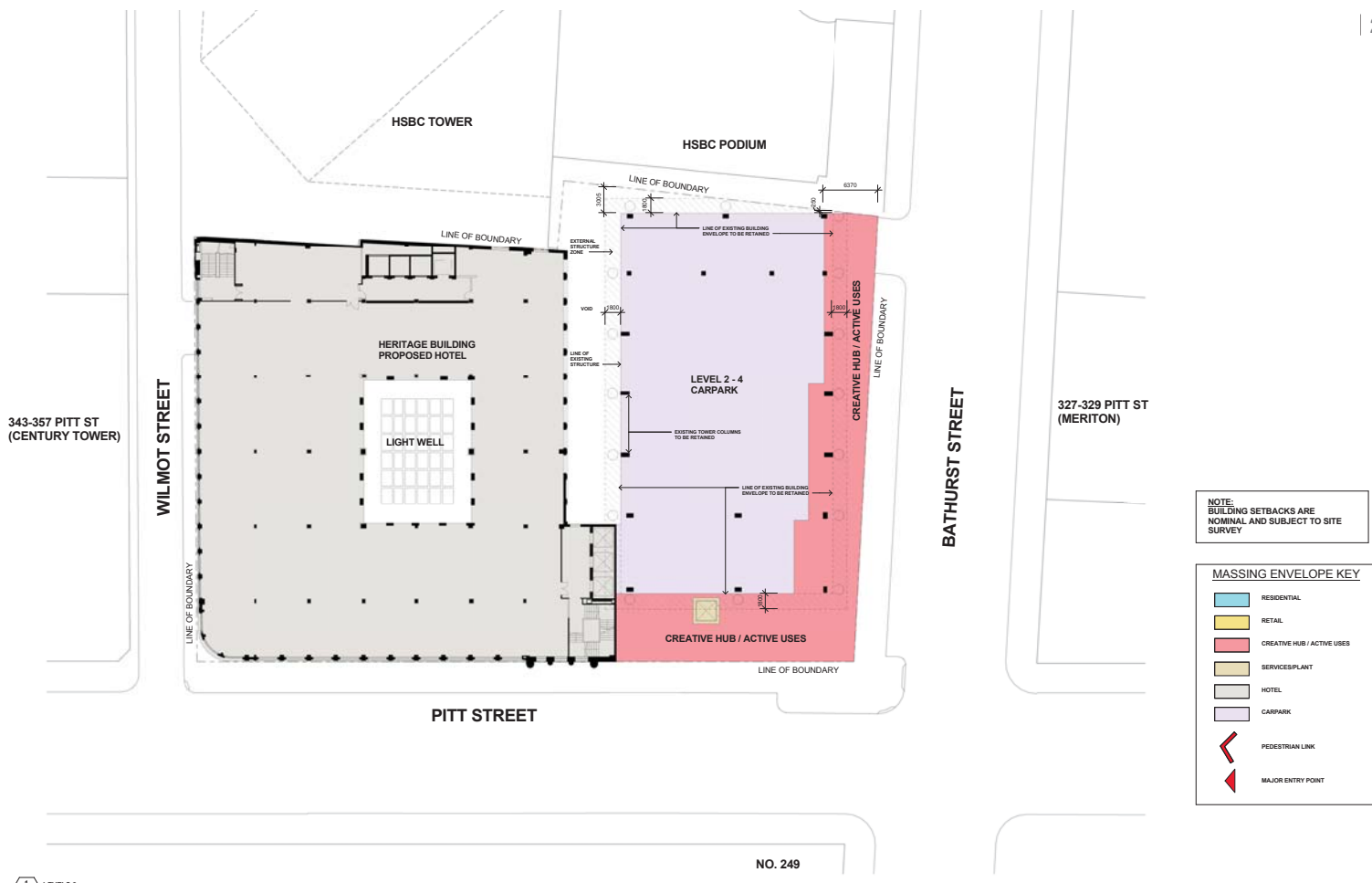


Architect:
cronepartners
level 2, 364 kent street,
sydney, nsw 2000, australia
ph: +61 2 8295 5300

Client:
GREENLAND HOLDING GROUP
OVERSEAS INVESTMENT COMPANY LIMITED
Greenland
FORTUNE GLOBAL 500

REV E 15.07.2013 PITT ST CARPARK ENTRY DELETED
REV F 12.08.2013 CREATIVE HUB RENAMED 'CREATIVE HUB / ACTIVE USES'

MEZZANINE LEVEL
scale As Indicated@A1
115 Bathurst Street
12/08/13
Rev: F
CA 3051
DA 06



1 LEVELS 2
SCALE 1:200

NO. 249

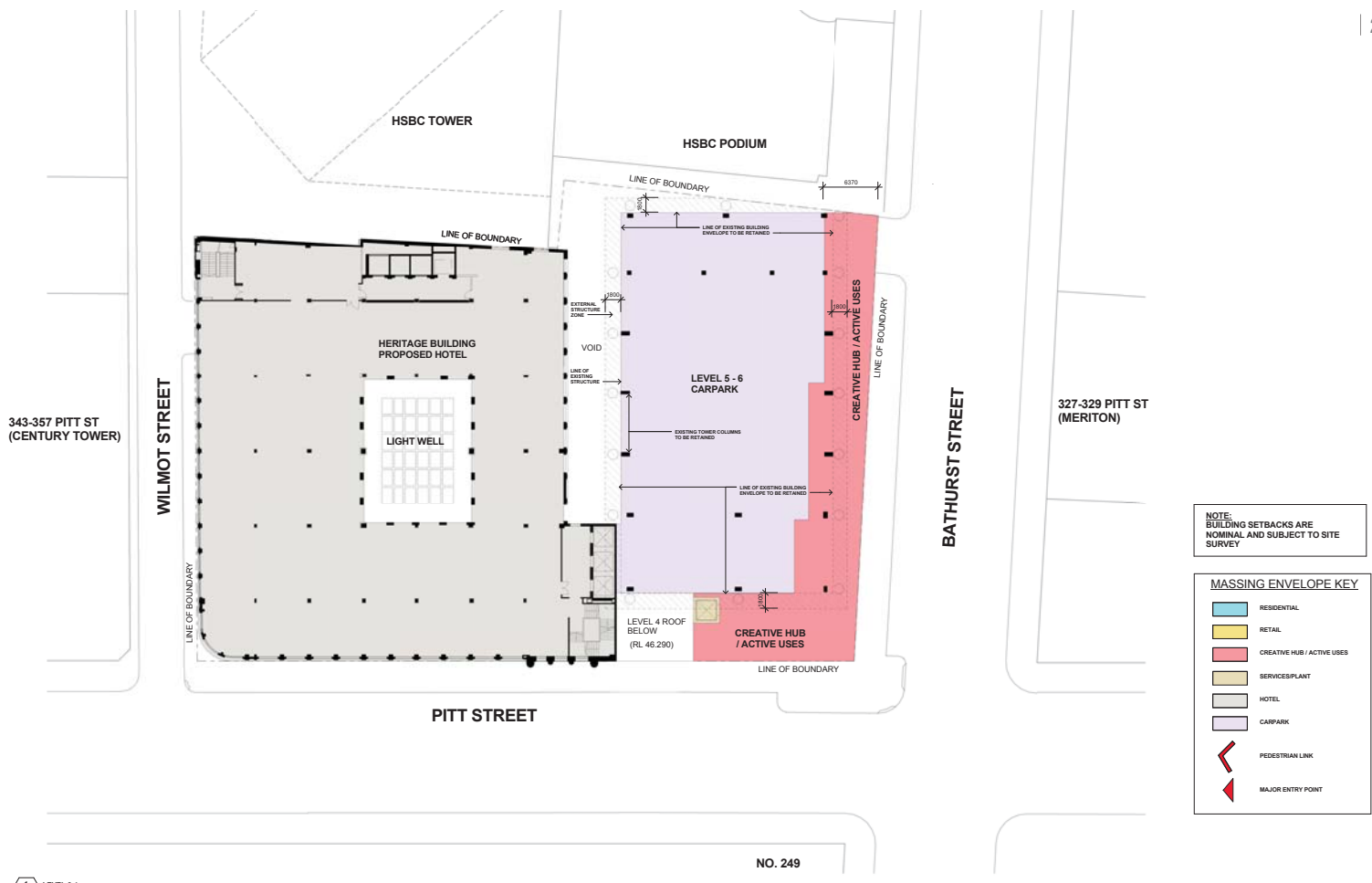
Architect:
cronepartners
level 2, 364 kent street,
sydney, nsw 2000, australia
ph: +61 2 8295 5300

Client:
GREENLAND HOLDING GROUP
OVERSEAS INVESTMENT COMPANY LIMITED
Greenland
FORTUNE GLOBAL 500

REV E 15.07.2013 PITT ST CARPARK ENTRY DELETED
CREATIVE HUB WIDTH INCREASED TO MINIMUM 6m
REV F 12.08.2013 CREATIVE HUB RENAMED 'CREATIVE HUB / ACTIVE USES'

MASSING ENVELOPE
LEVELS 2 - 4 | Rev: F | DA 07.1
CA 3051
115 Bathurst Street
12/08/13
scale As indicated @A1

ATTACHMENT A



NOTE:
BUILDING SETBACKS ARE
NOMINAL AND SUBJECT TO SITE
SURVEY.

MASSING ENVELOPE KEY

- RESIDENTIAL
- RETAIL
- CREATIVE HUB / ACTIVE USES
- SERVICES/PLANT
- HOTEL
- CARPARK
- PEDESTRIAN LINK
- MAJOR ENTRY POINT

1 LEVEL 3-4
SCALE 1:200

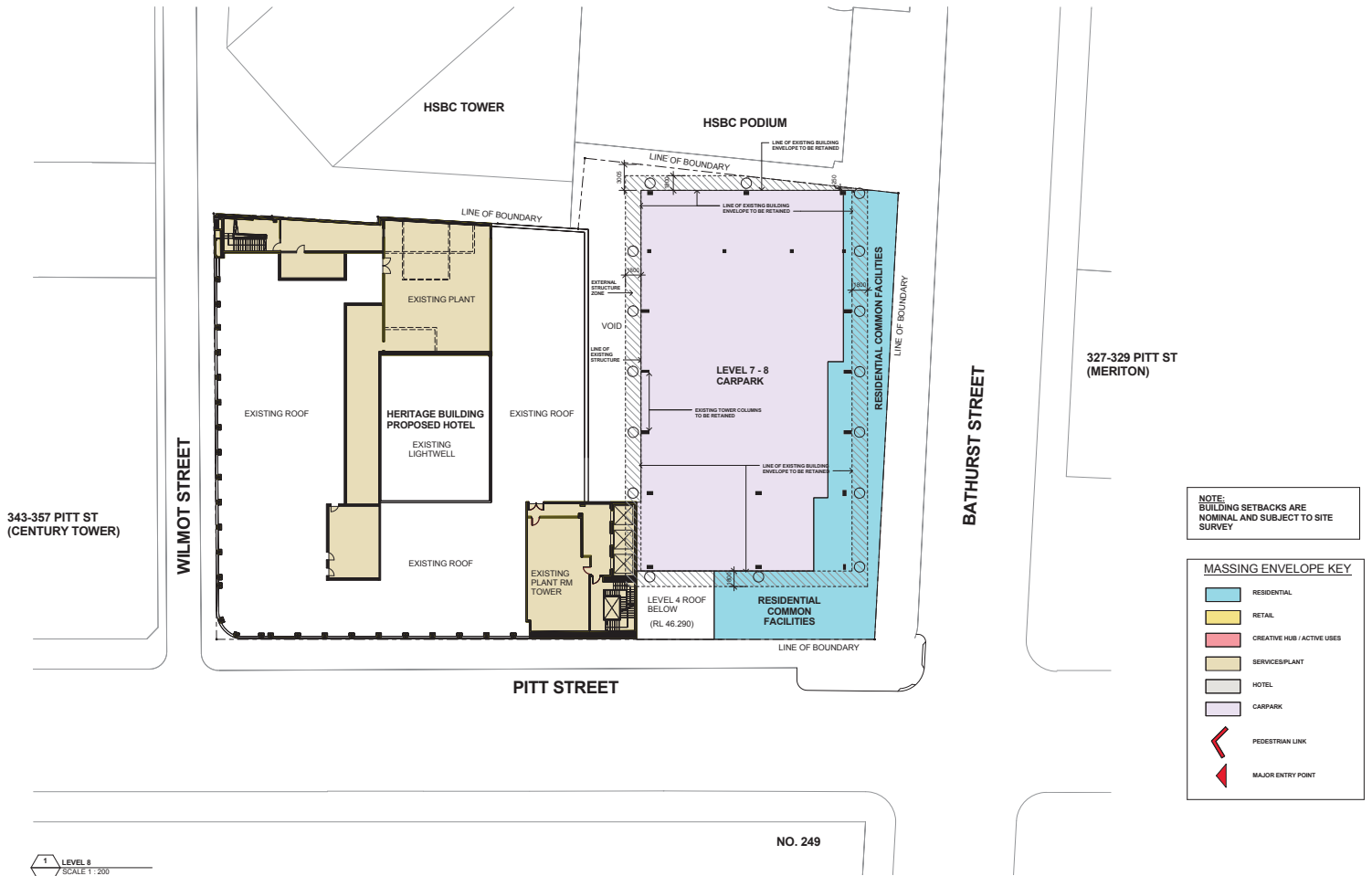
NO. 249

Architect:
cronepartners
level 2, 364 kent street,
sydney, nsw 2000, australia
ph: +61 2 8295 5300

Client:
GREENLAND HOLDING GROUP
OVERSEAS INVESTMENT COMPANY LIMITED
Greenland
FORTUNE GLOBAL 500

REV E 15.07.2013 PITT ST CARPARK ENTRY DELETED
CREATIVE HUB WIDTH INCREASED TO MINIMUM 6m
REV F 12.08.2013 CREATIVE HUB RENAMED CREATIVE HUB / ACTIVE USES

MASSING ENVELOPE
LEVELS 5 - 6 | Rev: F | DA 07.2
115 Bathurst Street
12/08/13
scale As Indicated @A1

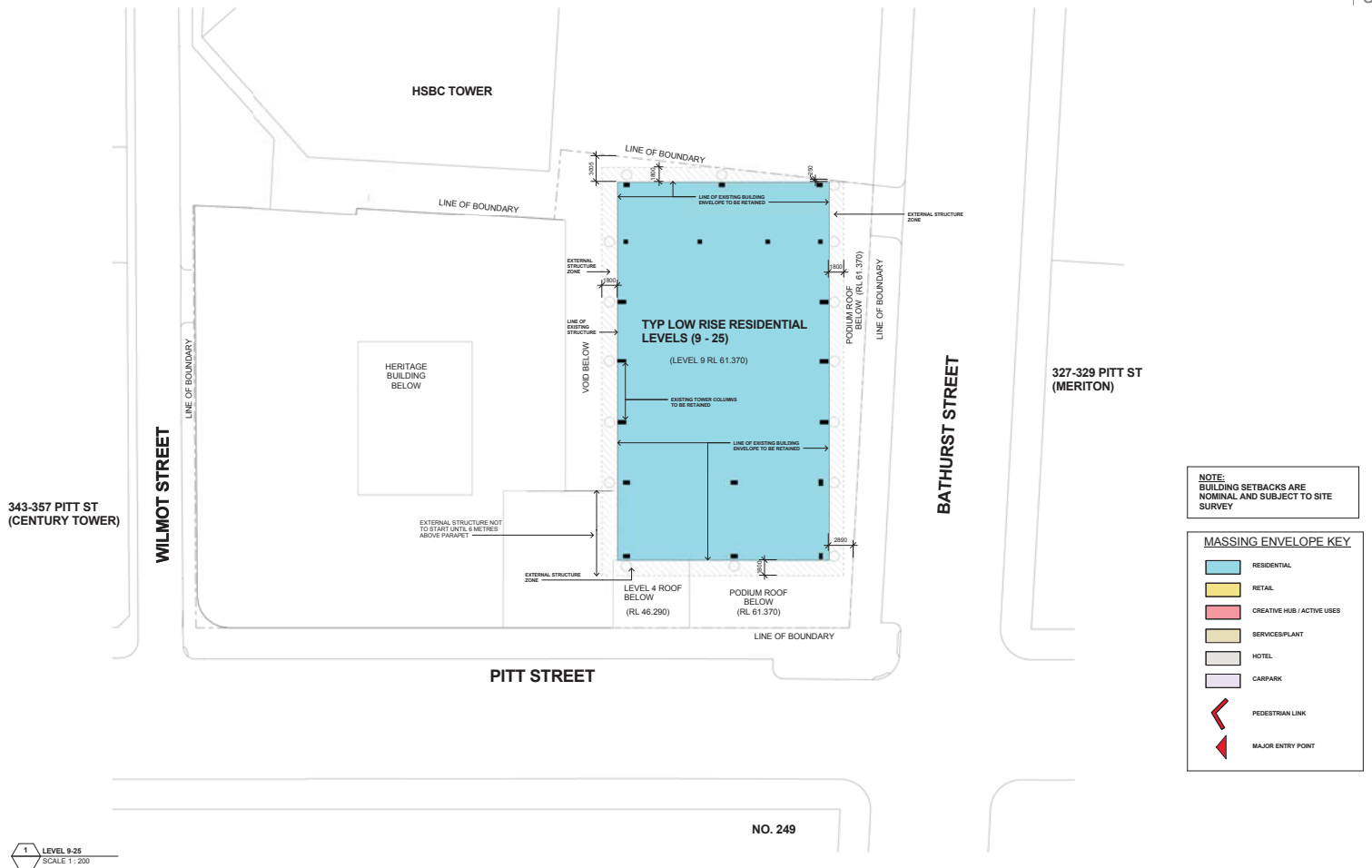


Architect:
cronepartners
level 2, 364 kent street,
sydney, nsw 2000, australia
ph: +61 2 8295 5300

Client:
GREENLAND HOLDING GROUP
OVERSEAS INVESTMENT COMPANY LIMITED
Greenland
FORTUNE GLOBAL SEE

REV D 20.05.2013 HERITAGE ROOF ADDITION REMOVED.
GFA TRANSFERRED TO TOWER.
REV E 15.07.2013 PITT ST CARPARK ENTRY DELETED
RESIDENTIAL COMMON FACILITIES (ACTIVE USE) WIDTH INCREASED TO MINIMUM 6m
REV F 12.08.2013 CREATIVE HUB RENAMED 'CREATIVE HUB / ACTIVE USES'

MASSING ENVELOPE
LEVEL 7 - 8 | Rev: F | DA 08
CA 3051
115 Bathurst Street
12/08/13
scale As indicated @A1



NOTE:
BUILDING SETBACKS ARE
NOMINAL AND SUBJECT TO SITE
SURVEY

MASSING ENVELOPE KEY	
	RESIDENTIAL
	RETAIL
	CREATIVE HUB / ACTIVE USES
	SERVICES/PLANT
	HOTEL
	CARPARK
	PEDESTRIAN LINK
	MAJOR ENTRY POINT

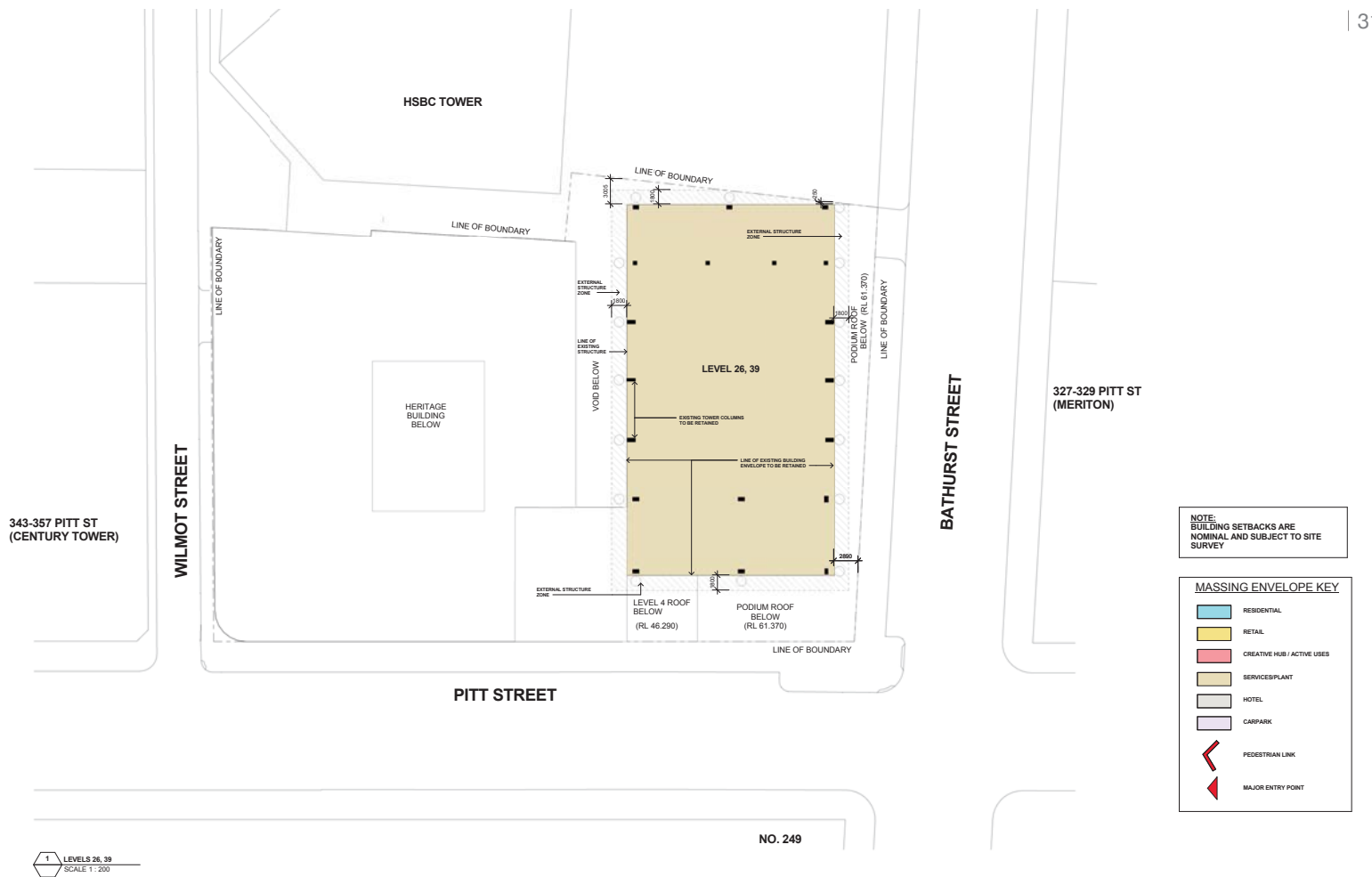
Architect:
cronepartners
level 2, 364 kent street,
sydney, nsw 2000, australia
ph: +61 2 8295 5300

Client:
GREENLAND HOLDING GROUP
OVERSEAS INVESTMENT COMPANY LIMITED
Greenland
FORTUNE GLOBAL 500
Greenland
infinite

REV E 15.07.2013 PITT ST CARPARK ENTRY DELETED
REV F 12.08.2013 CREATIVE HUB RENAMED 'CREATIVE HUB / ACTIVE USES'

MASSING ENVELOPE
LEVELS 9 TO 25 | Rev: F | DA 09
CA 3051
115 Bathurst Street
12/08/13
scale As Indicated @A1

ATTACHMENT A



NOTE:
BUILDING SETBACKS ARE
NOMINAL AND SUBJECT TO SITE
SURVEY

MASSING ENVELOPE KEY	
	RESIDENTIAL
	RETAIL
	CREATIVE HUB / ACTIVE USES
	SERVICES/PLANT
	HOTEL
	CARPARK
	PEDESTRIAN LINK
	MAJOR ENTRY POINT

1 LEVELS 26, 39
SCALE 1:200

NO. 249

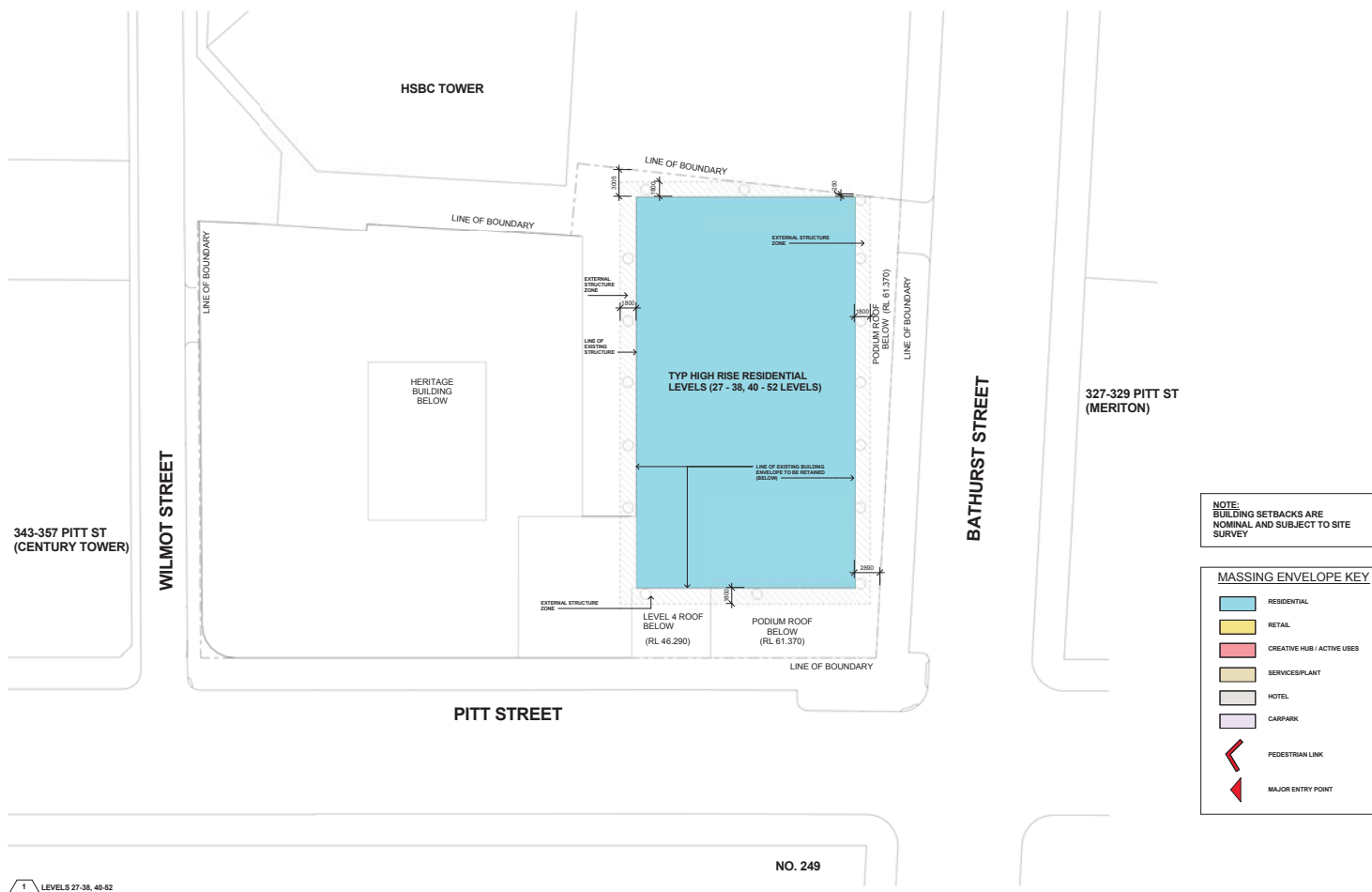
MASSING ENVELOPE

Architect:
cronepartners
level 2, 364 kent street,
sydney, nsw 2000, australia
ph: +61 2 8295 5300

Client:
GREENLAND HOLDING GROUP
OVERSEAS INVESTMENT COMPANY LIMITED
Greenland
FORTUNE GLOBAL 500
Greenland
infinite

REV E 15.07.2013 PITT ST CARPARK ENTRY DELETED
REV F 12.08.2013 CREATIVE HUB RENAMED 'CREATIVE HUB / ACTIVE USES'

LEVELS 26,39 PLANT LEVELS | Rev: F | DA 10
115 Bathurst Street | 12/08/13 | CA 3051
scale As Indicated @A1



1 LEVELS 27-38, 40-52
SCALE 1:200

NO. 249

MASSING ENVELOPE

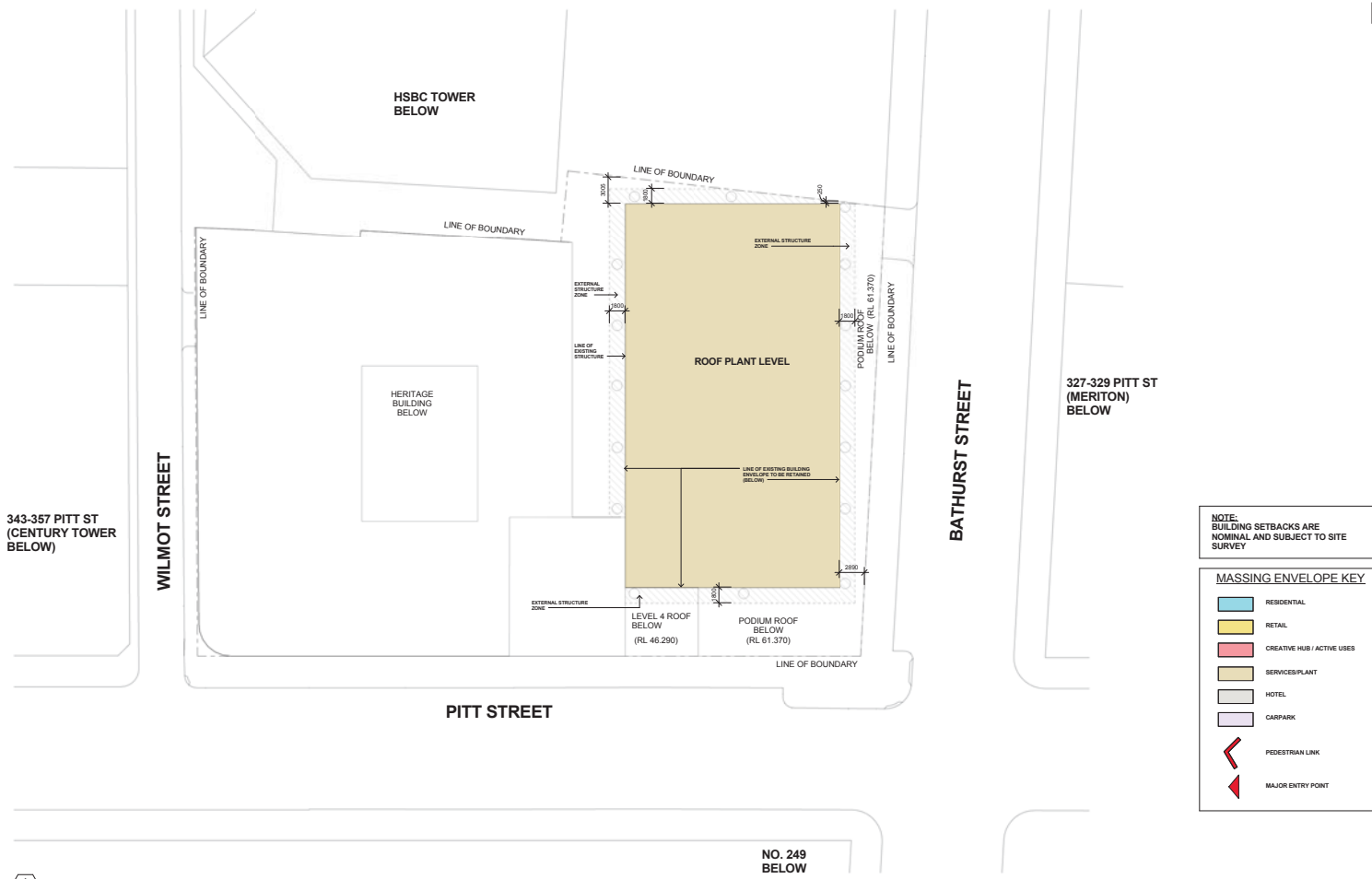
LEVELS 27-38, 40-52 | Rev. F | DA 11
CA 3051
115 Bathurst Street
12/08/13
scale As Indicated @1

Architect:
cronepartners
level 2, 364 kent street,
sydney, nsw 2000, australia
ph: +61 2 8295 5300

Client:
GREENLAND HOLDING GROUP
OVERSEAS INVESTMENT COMPANY LIMITED
Greenland
FORTUNE GLOBAL 500
Greenland
infinite

REV E 15.07.2013 PITT ST CARPARK ENTRY DELETED
REV F 12.08.2013 CREATIVE HUB RENAMED 'CREATIVE HUB / ACTIVE USES'

ATTACHMENT A



NOTE:
BUILDING SETBACKS ARE
NOMINAL AND SUBJECT TO SITE
SURVEY

MASSING ENVELOPE KEY	
	RESIDENTIAL
	RETAIL
	CREATIVE HUB / ACTIVE USES
	SERVICES/PLANT
	HOTEL
	CARPARK
	PEDESTRIAN LINK
	MAJOR ENTRY POINT

1 Roof Plant Room Level
SCALE 1:200

NO. 249
BELOW

MASSING ENVELOPE



ROOF PLANT LEVEL
115 Bathurst Street
12/08/13
scale As Indicated @A1

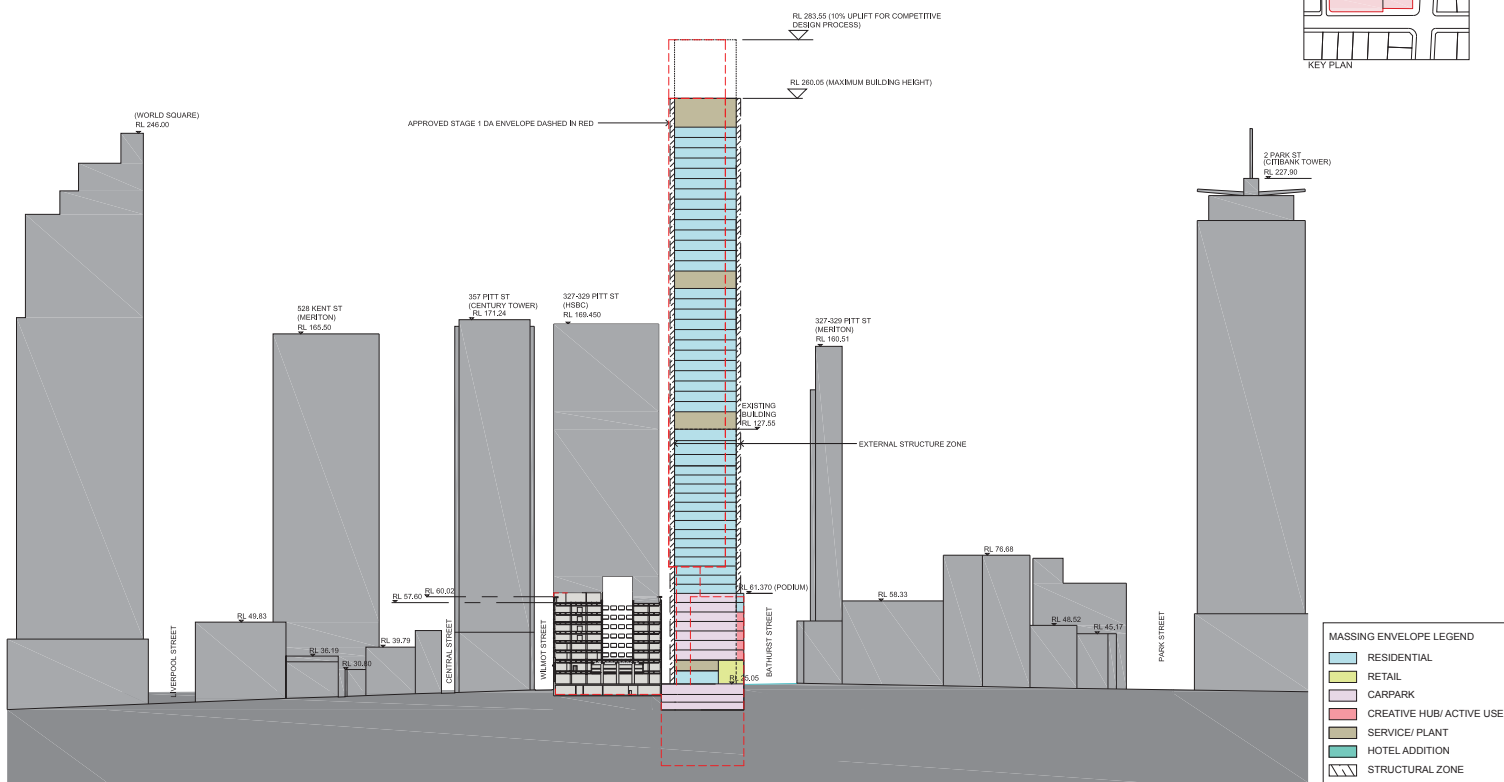
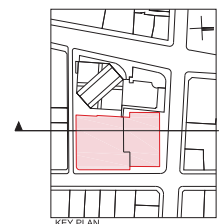
Rev: F
CA 3051
DA 12

Architect:
cronepartners
level 2, 364 kent street,
sydney, nsw 2000, australia
ph: +61 2 8295 5300

Client:
GREENLAND HOLDING GROUP
OVERSEAS INVESTMENT COMPANY LIMITED

REV E 15.07.2013 PITT ST CARPARK ENTRY DELETED
REV F 12.08.2013 CREATIVE HUB RENAMED 'CREATIVE HUB / ACTIVE USES'

ATTACHMENT A



MASSING ENVELOPE LEGEND

- RESIDENTIAL
- RETAIL
- CARPARK
- CREATIVE HUB/ ACTIVE USE
- SERVICE/ PLANT
- HOTEL ADDITION
- STRUCTURAL ZONE

MASSING ENVELOPE

SECTION | Rev:F | DA 13
 115 Bathurst Street
 CA 3051
 12/08/13

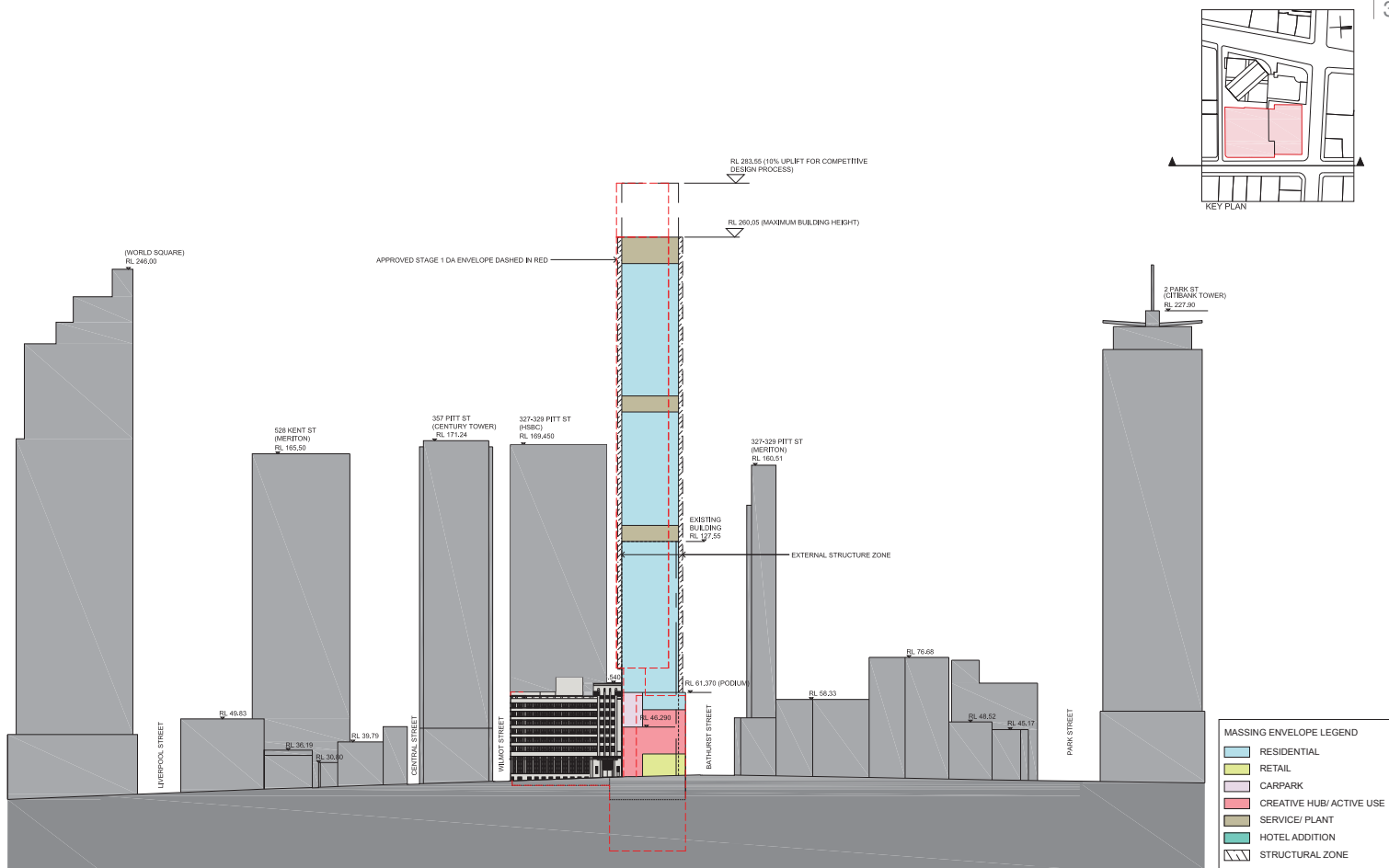
Architects:
cronepartners
 level 2, 384 kent street,
 sydney, nsw 2000, australia
 ph: +61 2 8295 5300

Client:
 GREENLAND HOLDING GROUP
 OVERSEAS INVESTMENT COMPANY LIMITED

REV D 20.05.2013 HERITAGE ROOF ADDITION REMOVED
 GFA TRANSFERRED TO TOWER
 1 x HIGH RISE LEVEL
 ADDED TO TOWER
 REV E 15.07.2013 PITT ST CARPARK ENTRY DELETED
 REV F 12.08.2013 CREATIVE HUB RENAMED 'CREATIVE HUB/ ACTIVE USES'



ATTACHMENT A



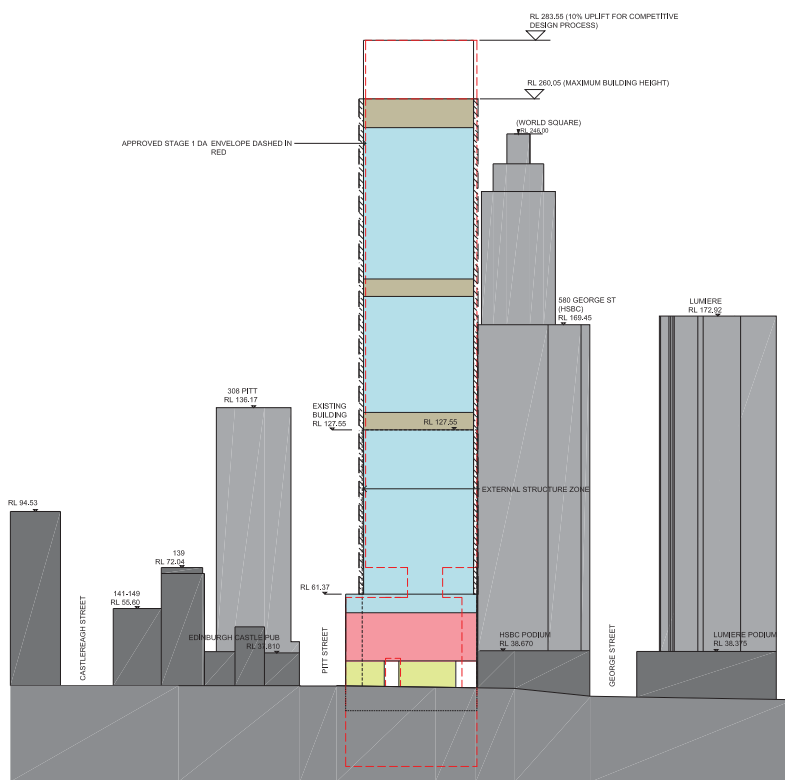
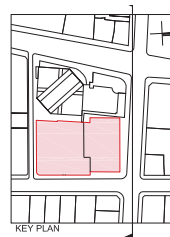
Architects:
cronepartners
level 2, 364 kent street,
sydney, nsw 2000, australia
ph: +61 2 8295 5300

Client:
GREENLAND HOLDING GROUP
OVERSEAS INVESTMENT COMPANY LIMITED
Greenland FORTUNE GLOBAL 500
Greenland infinite

REV D 20.05.2013 HERITAGE ROOF ADDITION REMOVED
GFA TRANSFERRED TO TOWER
1 x HIGH RISE LEVEL
ADDED TO TOWER
REV E 15.07.2013 PITT ST CARPARK ENTRY DELETED
REV F 12.08.2013 CREATIVE HUB RENAMED 'CREATIVE HUB/ ACTIVE USES'

MASSING ENVELOPE
EAST ELEVATION | Rev:F
CA 3051 DA14
scale 1:1500 @A1
115 Bathurst Street
12/08/13

ATTACHMENT A



MASSING ENVELOPE LEGEND	
[Light Blue Box]	RESIDENTIAL
[Light Green Box]	RETAIL
[Light Purple Box]	CARPARK
[Pink Box]	CREATIVE HUB/ ACTIVE USE
[Light Brown Box]	SERVICE/ PLANT
[Light Teal Box]	HOTEL ADDITION
[Dashed Line Box]	STRUCTURAL ZONE

MASSING ENVELOPE

NORTH ELEVATION | Rev:F CA 3051 DA 15



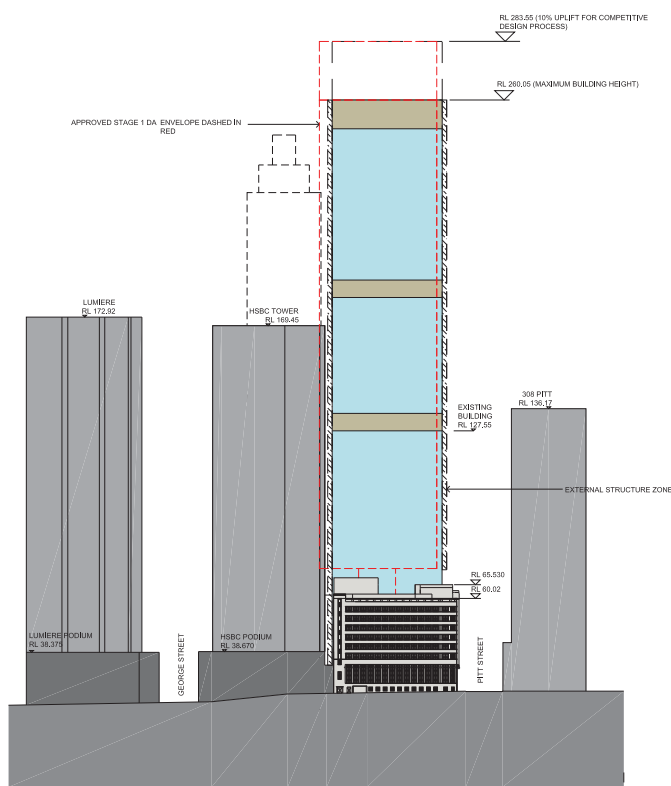
Scale 1:1500 @A1 115 Bathurst Street 12/08/13

Architects: **cronepartners**
level 2, 384 kent street, sydney, nsw 2000, australia
ph: +61 2 8295 5300

Client: GREENLAND HOLDING GROUP OVERSEAS INVESTMENT COMPANY LIMITED
Greenland FUTURE GLOBAL LTD
Greenland infinite GREENLAND INVESTMENT MANAGEMENT LTD

REV D 20.05.2013 HERITAGE ROOF ADDITION REMOVED
GFA TRANSFERRED TO TOWER
1 x HIGH RISE LEVEL
ADDED TO TOWER
REV E 15.07.2013 PITT ST CARPARK ENTRY DELETED
REV F 12.08.2013 CREATIVE HUB RENAMED 'CREATIVE HUB/ ACTIVE USES'

ATTACHMENT A



MASSING ENVELOPE LEGEND

- RESIDENTIAL
- RETAIL
- CARPARK
- CREATIVE HUB/ ACTIVE USE
- SERVICE/ PLANT
- HOTEL ADDITION
- STRUCTURAL ZONE

MASSING ENVELOPE

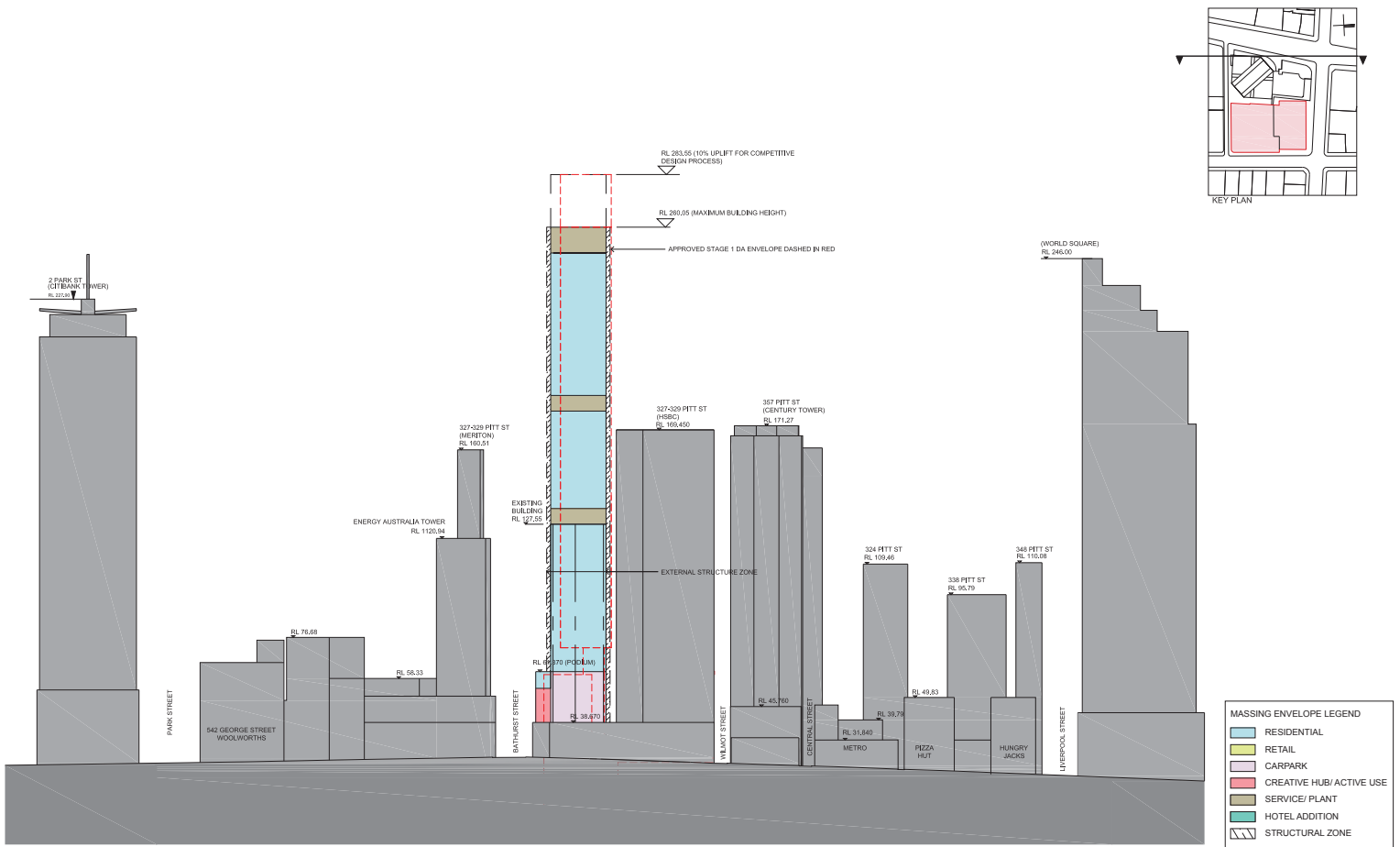
Architects:
cronepartners
level 2, 364 kent street,
sydney, nsw 2000, australia
ph: +61 2 8295 5300

Client:
GREENLAND HOLDING GROUP
OVERSEAS INVESTMENT COMPANY LIMITED
Greenland FUTURE GLOBAL 100
Greenland infinite

REV D	20.05.2013	HERITAGE ROOF ADDITION REMOVED GFA TRANSFERRED TO TOWER 1 x HIGH RISE LEVEL ADDED TO TOWER
REV E	15.07.2013	PITT ST CARPARK ENTRY DELETED
REV F	12.08.2013	CREATIVE HUB RENAMED 'CREATIVE HUB/ ACTIVE USES'

SOUTH ELEVATION | Rev: F | CA 3051 | DA 16
 115 Bathurst Street | 12/08/13
 scale: 1:1500 @A1

ATTACHMENT A



Architects:
cronepartners
level 2, 364 kent street,
sydney, nsw 2000, australia
ph: +61 2 8295 5300

Client:
GREENLAND HOLDING GROUP
OVERSEAS INVESTMENT COMPANY LIMITED
Greenland
INFRASTRUCTURE GLOBAL LTD
Greenland
infinite

REV D 20.05.2013 HERITAGE ROOF ADDITION REMOVED
GFA TRANSFERRED TO TOWER
1 x HIGH RISE LEVEL
ADDED TO TOWER
REV E 15.07.2013 PITT ST CARPARK ENTRY DELETED
REV F 12.08.2013 CREATIVE HUB RENAMED 'CREATIVE HUB/ ACTIVE USES'

MASSING ENVELOPE
WEST ELEVATION Rev:F CA 3051 DA 17
115 Bathurst Street 12/08/13
Scale 1:1500 @A1